



32 31 00/AMR  
BuyLine 7407

# SECURITY FENCING & GATES



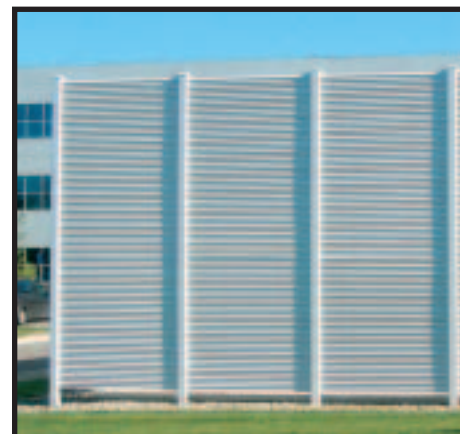
**GATES**



**FENCING**



**FIXED LOUVER**



Visit our Web Site [www.ametco.com](http://www.ametco.com)  
for Master Spec • CAD Drawings • Photo Gallery



# SECURITY FENCING & GATES

## BUILT TO LAST

The Ametco fencing system is an exclusive system, an alternative approach to fencing design, the concept of which is both functional and decorative. The Ametco fencing system is ideally suited to harmonize with any environment. This fencing system has been created through advanced techniques by Ametco Mfg. Corp., a company whose dynamic approach and flair in metal fabrication have now conceived this unique system, which has revolutionized the traditional fencing image and extended the range of applications throughout the private and industrial building industries. Ametco fencing system is manufactured using the electro-forged welding process, giving complete penetration of the cross member. Ametco Mfg. Corp. has developed a highly desirable fencing product which fits perfectly into modern architectural and security applications.

## LASTING COLORS

Ametco fencing is protected by extremely effective coating systems, giving long life with a touch of elegance. The hot dip galvanized finish with a polyester powder coating gives Ametco fencing protection from the elements, as well as increasing its sturdiness and eliminating maintenance. This system gives the best corrosion protection in the industry. The hot dip galvanizing will leave rough areas on the treated surface. These rough areas do not impair the coating in terms of corrosion resistance. The galvanized product is then powder coated. The color gives an "extra" touch of appeal to the fencing, harmonizing with its surroundings. Once you have selected the color from the wide choices available, it will endure exposure without crazing or fading. For jobs where a smooth surface is required, see Ametco's fixed louver aluminum or stainless steel product.

## WARRANTY

The American Hot Dip Galvanizers Association, Inc. states, "The life expectancy of galvanized coatings on typical structural members is far in excess of 50 years in most rural environments, and 20 to 25 years plus, even in severe urban and coastal exposure."

The warranty for the powder coated finish is 10 years. The polyester coated galvanized metal will remain corrosion free for years. Performance properties of the polyester coating are as follows. SALT SPRAY RESISTANCE: (ASTM B-117) Bonderite 1000 steel panels, in a scored condition, exhibit no undercutting after 500 hours in 5% salt spray testing at 95 degrees F and 95% relative humidity. No rusting or blistering on panel face. Under the same conditions after 1000 hours the panels showed less than  $\frac{3}{16}$ " undercutting.

WEATHERABILITY: (ASTM D822) After one year exposure in South Florida with panels facing south and tilted at a 45 degree angle, a high gloss white polyester coating retains 88% of its gloss (gloss readings obtained on washed panels). No film failure.

A 2-part polyurethane coat on top of hot dip galvanized is used when gates are too large to be powder coated. Ametco Mfg. Corp. certifies that its fencing systems are free from defects in material and workmanship. The polyester coated fencing is guaranteed not to crack, peel or blister for a period of 10 years. Accidental damages, defects resulting from improper installation and damage from vandalism or abuse are not included. Warranty is limited to a prorated value of the coating, not to exceed the original value of the coating. Or, at Ametco's discretion, re-coating the panel but not to include labor for removal or reinstallation.

In the interest of improving quality and design, AMETCO reserves the right to amend specifications without giving prior notice.



*Metro design used at California shopping mall*



*Lattice design used at Florida condo entrance*

**All products shown in this catalog are manufactured in Willoughby, Ohio from steel produced in the USA**



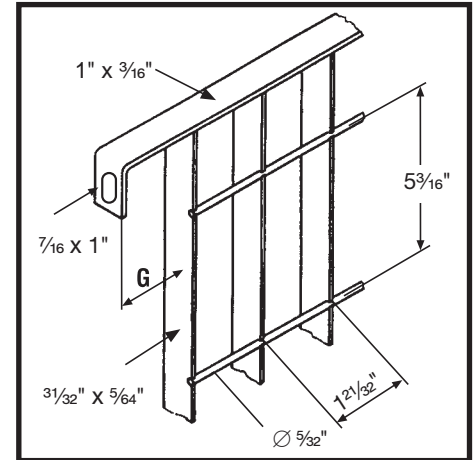
32 31 00/AMR  
BuyLine 7407

## GROTTO<sup>®</sup>

1 21/32" x 5 3/16" MESH

### Applications

The simple clean lines of this type of fencing means that it can be used for a vast range of applications. The close centers makes this design practically unclimbable.

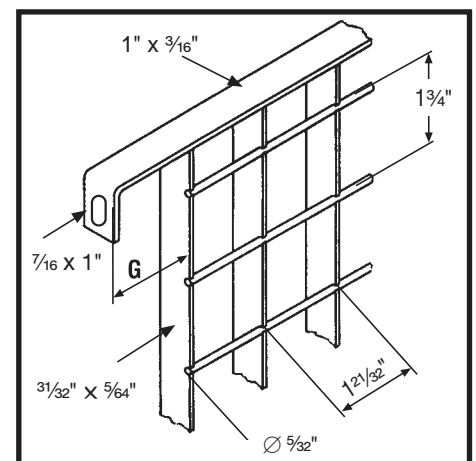


## SHIELD<sup>®</sup>

1 21/32" x 1 3/4" MESH

### Applications

The small square opening makes this design ideal for railing infill panels—window guards—and any application where control of the opening size is needed.



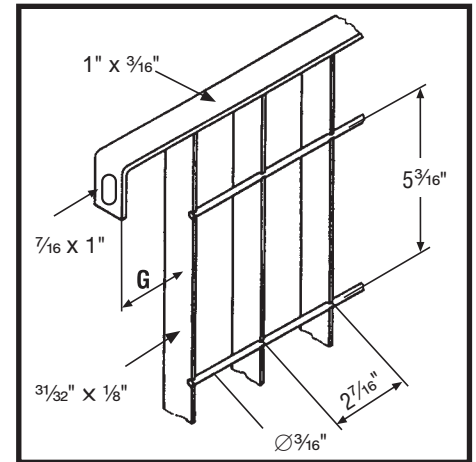


## METRO<sup>®</sup>

2<sup>7</sup>/<sub>16</sub>" x 5<sup>3</sup>/<sub>16</sub>" MESH

### Applications

The simple, clean lines of this type of fencing means that it can be used for a vast range of applications. It is particularly suitable for both prestige and high security applications including residential, sports, leisure, industrial and military.

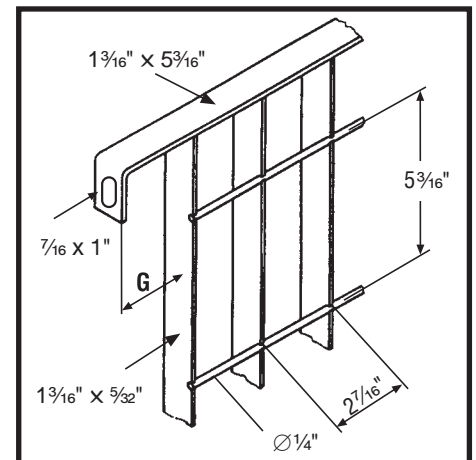


## BLOCKADE<sup>®</sup>

2<sup>7</sup>/<sub>16</sub>" x 5<sup>3</sup>/<sub>16</sub>" MESH

### Applications

Where safety, strength and anti-break-in characteristics are required: military deposits or installations, repeaters, radar stations, petrochemical installations; preferably to be fitted with burglar-proof uprights and safety bolts. Can be fitted with alarm devices.



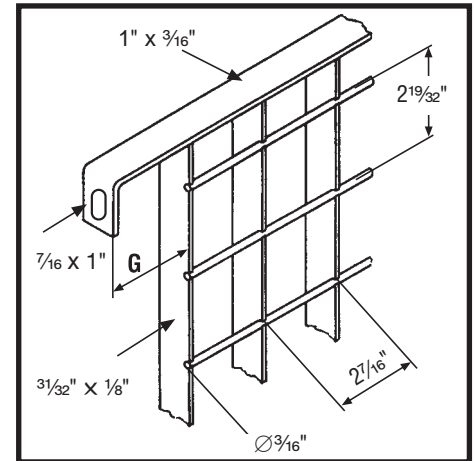
32 31 00/AMR  
BuyLine 7407

## LATTICE

27/16" x 219/32" MESH

### Applications

Great versatility for both civil and industrial use and especially suitable for railings and internal decoration.

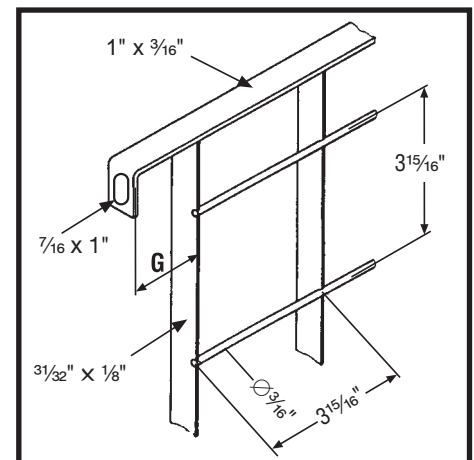


## STADIUM®

315/16" x 315/16" MESH

### Applications

The Stadium model is suggested for economy in large areas and the internal sub-division of areas already fenced, for the three sides of outer fencing which are not seen, internal decoration, special applications and false ceilings.



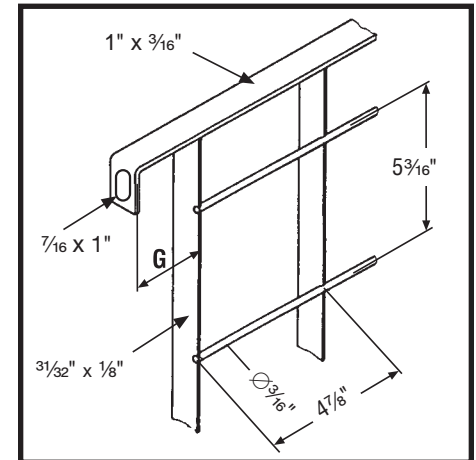


# TRELLIS®

4<sup>7</sup>/<sub>8</sub>" x 5<sup>3</sup>/<sub>16</sub>" MESH

## Applications

The Trellis model is suggested for economy in large areas and the internal sub-division of areas already fenced, for the three sides of outer fencing which are not seen, internal decoration, special applications and false ceilings.



## ARCHITECTURAL FENCING TRADE NAMES

PRODUCT	AMETCO®	ORSOGRIL®
2 <sup>7</sup> / <sub>16</sub> " x 5 <sup>3</sup> / <sub>16</sub> " Mesh with 1" x 1/8" Main Bar	METRO®	STEROPE
2 <sup>7</sup> / <sub>16</sub> " x 5 <sup>3</sup> / <sub>16</sub> " Mesh with 1 <sup>3</sup> / <sub>16</sub> " x 5/32" Main Bar	BLOCKADE®	BRITOSTEROPE
2 <sup>7</sup> / <sub>16</sub> " x 2 <sup>19</sup> / <sub>32</sub> " Mesh with 1" x 1/8" Main Bar	LATTICE	PLEIONE
3 <sup>15</sup> / <sub>16</sub> " x 3 <sup>15</sup> / <sub>16</sub> " Mesh with 1" x 1/8" Main Bar	STADIUM®	
1 <sup>21</sup> / <sub>32</sub> " x 5 <sup>3</sup> / <sub>16</sub> " Mesh with 1" x 1/8" Main Bar	GROTTO®	DANAE
1 <sup>21</sup> / <sub>32</sub> " x 1 <sup>3</sup> / <sub>4</sub> " Mesh with 1" x 5/64" Main Bar	SHIELD®	DIONE
4 <sup>7</sup> / <sub>8</sub> " x 5 <sup>3</sup> / <sub>16</sub> " Mesh with 1" x 1/8" Main Bar	TRELLIS®	ALCIONE
1 <sup>13</sup> / <sub>16</sub> " x 5 <sup>7</sup> / <sub>32</sub> " Mesh – 80% Direct Visual Screening	SHADOW® 80	TALIA
1 <sup>13</sup> / <sub>16</sub> " x 5 <sup>7</sup> / <sub>32</sub> " Mesh – 100% Direct Visual Screening	SHADOW® 100	TALIA 100

ORSOGRIL is a registered Trade name of ORSOGRIL SPA

Contact **AMETCO** for our full range of product literature covering FIXED LOUVER FENCING, ALUMINUM FENCING, WELDED WIRE FENCING, SECURITY GATES, RAILING, SUNSHADE, LOUVERS, PERFORATED METAL & PLASTIC, ARCHITECTURAL GRILLES & SCREENS.

# SHADOW<sup>®</sup>

## Characteristics

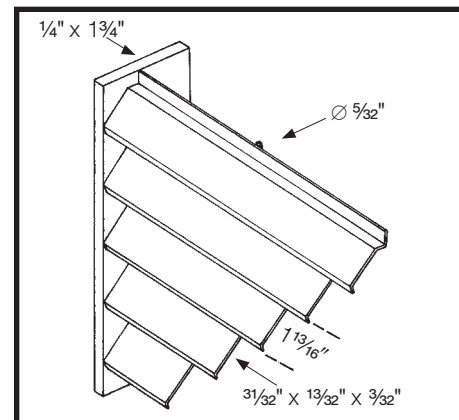
Model with inclined sections, exclusive polished design, without cuts or joints and therefore monolithic. It can be installed with horizontal sections, in which case it is practically peep-proof, or with vertical sections, thus allowing a reduced side visibility only.

## Applications

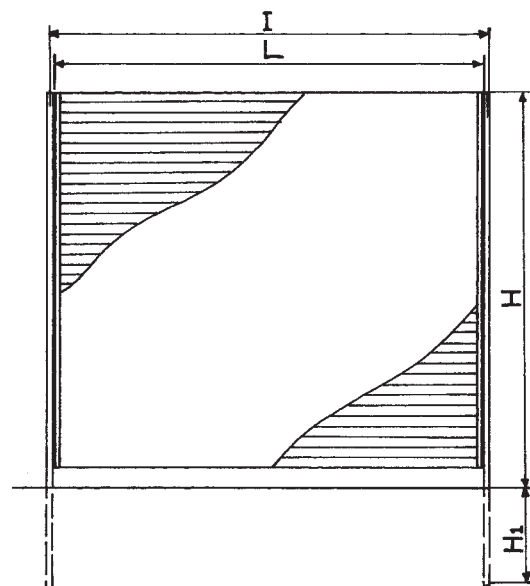
Suitable for use on balconies, as sunscreens, protective screens, false ceilings, ventilation openings, parking garages and special applications.

## Specify:

Electro-forge welded steel fencing. Ametco Shadow design horizontal or vertical— $1\frac{31}{32}$ " x  $\frac{1}{16}$ " formed main bar,  $\frac{5}{32}$ " round cross bar,  $1\frac{13}{16}$ " x  $5\frac{7}{32}$ " mesh. Galvanized to ASTM 123 and/or powder polyester coated. The Shadow design weight is 2.84 lbs. per Sq. Ft.



### HORIZONTAL APPLICATION (May Be Used Vertically)



### DIRECT VISUAL SCREENING

80%

$\frac{3}{8}$ " Gap



100%

No Gap



<b>H</b>	Panel Height	Up to 144" High
<b>H1</b>	Anchor Length*	8" Up to 60" High 10" Up to 80" High 12" Up to 96" High 18" Over 96" High
<b>I</b>	Post Width	64-31/32" Maximum
<b>L</b>	Panel Width	64-21/32" Maximum
<b>M</b>	Width of Grille	64-21/32" Max Horiz 62-3/8" Max Vert
<b>G</b>	Lug Projection	1-5/32" Maximum
	Post Size*	2-1/2" X 5/16" Flat bar up to 60" High 3-1/2" X 5/16" Flat bar up to 96" High 2" X 2" Square tube over 96" High

\*Final Determination of anchor length and post size is based on panel size, site conditions and design consideration

## Available colored coatings

SEE PAGE 2.



Custom colors available at an additional charge.  
Note: The reprint of the color chart may vary from actual finish color.

## INSTALLATION

The Ametco system is simplicity itself. Standard panels are merely bolted to the uprights which are anchored conventionally. The modular design means it can be erected in a fraction of the time of most other rigid fences and allows easy replacement of any panels damaged. The ease of assembly coupled with strength and long-life make Ametco fencing one of the most cost-effective fencing.

### Anti-Intruder Posts

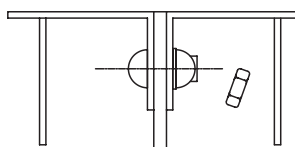
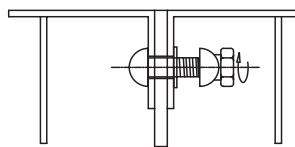
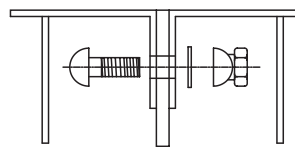
Complete with extension arm to carry 3 galvanized barbed wires and 3 holes for electrified wires. Anti-intruder posts are available for panels 83<sup>3</sup>/<sub>8</sub>" and 99" high

Extension Arm Dimensions:  
11<sup>3</sup>/<sub>4</sub>" x 2<sup>3</sup>/<sub>8</sub>" x 5<sup>5</sup>/<sub>16</sub>"

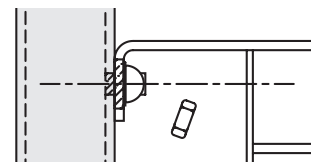
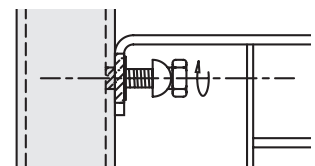
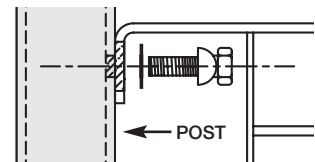
### Standard Bolts

Stainless Steel AISI 304  
Bolt Dimensions = 3<sup>3</sup>/<sub>8</sub>" x 2"

### SECURITY NUT for Thru-Bolt Application



### SECURITY BOLT for Post Application



### Ametco's security bolts and nuts

The hexagon nut will shear off from the cup head when the Ametco Security Bolt or Nut is tightened to the correct torque, rendering the bolt or nut nearly impossible to release.

Visit our Web Site [www.ametco.com](http://www.ametco.com)  
for Master Spec • CAD Drawings • Photo Gallery



4326 Hamann Parkway  
P.O. Box 1210  
Willoughby, Ohio 44096  
Web Site [www.ametco.com](http://www.ametco.com)

Phone (440) 951-4300  
Fax (440) 951-2542  
Toll Free 800-362-1360  
E-Mail [ametco@ametco.com](mailto:ametco@ametco.com)